

01 January 2023

## Letter of Traceability

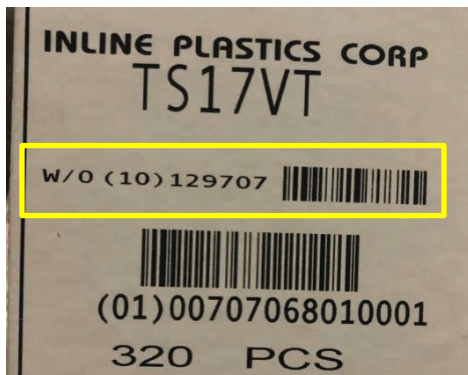
Inline Plastics Corp. has a traceability program.

**Inline Plastics Corp.** is Certified to SQF (Safe Quality Food) Food Safety Packaging and compliant to FDA 21 CFR requirements for Safe Food Packaging. Under these certifications and guidelines, we have established processes and procedures for track and trace. Each Inline facility, independently, conducts mock recalls, at a minimum twice annually, to ensure documented process are working as intended, thus meeting GFSI (SQF) Code requirements.

Each carton of product is identified with a specific date code which allows us to trace the product back to the raw material, machine and process as a whole. **Inline Plastics Corp.** utilizes the Work Order number during its Track and Trace activity. In other words, in the event of a voluntary recall, Inline would notify the Supply Chain to recall at the Work Order (Lot) level. (Figure 1 below). For customers meeting USDA or USFDA requirements, we encourage the use of the Lot Code (Work Order) and its related bar code for ease and consistency.

For additional detail used in customer concerns/complaints, **Inline Plastics Corp.** may ask for the ink-jet information from the side of the carton. While the presence of the inkjet is not compulsory, nor a Regulatory requirement, we provide this detail as a courtesy for additional manufacturing context. The ink jet code cipher may be found at our website.

*Figure 1*



This certificate is continuing and shall remain in full force and effect until revoked in writing. This version supersedes all previous certificates that might otherwise be effective.

Sincerely,



Jim Parker  
Director Corporate Quality, Compliance, and Continuous Improvement  
Inline Plastics Corp.